



Threshold Gate



KRS-E08 HR

24 V AC/DC - 1 changeover contact

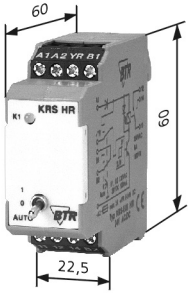
- LED indication
- manual control facility with checkback function

Part Number

110 667

threshold: 3 V DC
manual control facility: 1/0/Auto

Housing Dimensions



Description

The threshold gate serves as control for aggregates, pumps, fans, burners etc.

An analogue control signal between 0 and 10 V is used for operation. In the automatic mode ("Auto") the relay is activated as soon as the input voltage reaches the threshold. If the input voltage falls below the turn-off threshold the relay drops off.

The device is provided with a manual control facility with checkback function for servicing purposes.

Functional Description

The module offers two operation modes, they are set by the three-position switch (Auto, 0, 1).

1. Switch position "1":

The output relay is controlled by contacts A1 and A2.

2. Switch position "Auto":

The output relay is controlled by the voltage at input YR. The relay is activated at a voltage of >3 V DC and drops off at a voltage of <2.5 V DC. Voltage has to be continuously applied at contacts A1 and A2.

3. Switch position "0":

The relay is switched off (bridge over contacts 11 and 12).

Technical Data

Input

nominal voltage U_N 24 V AC/DC

current consumption

80 mA

at 24 V AC

16 mA

at 24 V DC

current consumption (input YR)

1 mA

at 10 V DC

operating voltage range

0.9 ... 1.1 x U_N

duty cycle

100 %

turn-on voltage (threshold)

3.0 V DC

turn-off voltage

2.5 V DC

response time

20 ms

release time

20 ms

protective circuitry

polarity reversal protection at inputs,

varistor at A1 - A2

LED yellow

-10 °C ... +50 °C

-25 °C ... +70 °C

Output

output contact

1 changeover contact

contact material

AgNi

switching voltage max.

250 V

input/output current

6 A

contact fuses

6 A

making/breaking capacity

6 A / 250 V / 1500 VA

at resistive load

1x10⁷ switching cycles

mechanical endurance

1x10⁵ switching cycles

electrical endurance

1200 switching cycles/h

permissible switching frequency

isolation per VDE 0110

250 V AC/DC

rated voltage

III

overvoltage category

2

pollution degree

test voltage coil/contact

4000 V, 50 Hz 1 min

switching capacity (switch)

120 V AC/28 V DC, 100 mA

at resistive load

housing IP50, terminal blocks IP20

type of protection (EN 60529)

2.5 mm²

wire cross section

any

mounting

green

colour

70 g

weight

22.5 x 60 x 60

housing dimensions WxHxL

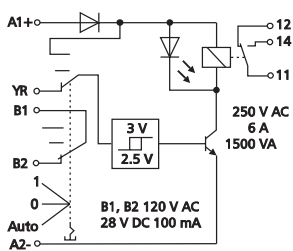
without spacing

modular

Wiring

A1	A2	YR	B1	A1 - A2 operating voltage 24 V AC/DC B1 - B2 manual checkback function YR signal input 11 - 12 - 14 output contact 1 changeover contact
11	12	14	B2	

Wiring Diagram



Function Diagram

