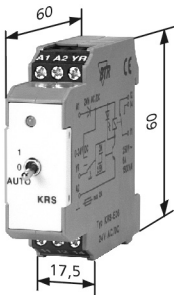


Threshold Gate

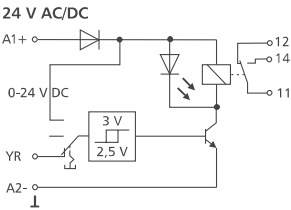
Housing Dimensions



Wiring

A1	A2	YR
A1 - A2 operating voltage		
YR signal input		
11 - 12 - 14		
output contact		
1 changeover		
11	12	14

Wiring Diagram



KRS-E06 with or w/o manual control facility
24 V AC/DC - 1 changeover contact

- LED indication
- with or without manual control facility

Part Numbers

110 661	threshold: 3 V DC manual control facility: 1/0/Auto
110 655	threshold: 3 V DC manual control facility: none

Description

The threshold gate KRS-E06 is used to control machines, pumps, fans, burners, etc. The module is also available without manual control facility.

Functional Description

The module is provided with a three position switch (Auto, 0, 1) to select one of the operation modes.

1. Switch position "Auto":

The output relay is controlled by the voltage at input YR. The operating voltage must be applied continuously at contact A1.

2. Switch position "1":

The output relay is controlled by contacts A1, A2.

3. Switch position "0":

The relay is switched off. Incoming signals at contacts A1 or YR produce no effect.

Technical Data

Input	nominal voltage U_N	24 V AC/DC
	current consumption	
	at 24 V AC	80 mA
	at 24 V DC	16 mA
	current consumption (input YR)	
	at 24 V DC	1.3 mA
	at 5 V DC	0.1 mA
	operating voltage range	0.85 ... 1.2 x U_N
	duty cycle	100 %
	turn-on voltage fixed threshold	3.0 V DC or 7.5 V DC
	turn-off voltage	2.5 V DC or 7.0 V DC
	tolerance	±10 %
	protective circuitry	polarity reversal protection at inputs, varistor at A1 - A2
	relay status indication	LED yellow
Output	operating temperature range	-10 °C ... +50 °C
	storage temperature range	-25 °C ... +70 °C
	output contact	1 changeover contact
	contact material	AgNi
	switching voltage max.	250 V
	input/output current	6 A
	continuous current max.	6 A
	contact fuses	6 A
	mechanical endurance	1x10 ⁷ switching cycles
	electrical endurance	1x10 ⁵ switching cycles
	permissible switching frequency	1200 switching cycles/h
	isolation per VDE 0110	
	rated voltage	250 V AC/DC
	overvoltage category	III
	pollution degree	2
Housing	test voltage coil/contact	4000 V, 50 Hz 1 min
	type of protection (EN 60529)	housing IP50, terminal blocks IP20
	wire cross section	2.5 mm ²
	mounting	any
	colour	green
	weight	70 g
	housing dimensions WxHxL	17.5 x 60 x 60 mm
	modular	without spacing