

Threshold Gate

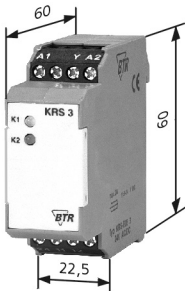
KRS-E08 3

24 V AC/DC - 1 changeover contact
with zero position

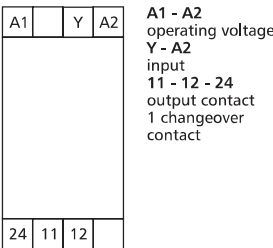
- LED indication

Part Number	
110 673	threshold: 0 V / 5 V / 10 V DC manual control facility: none

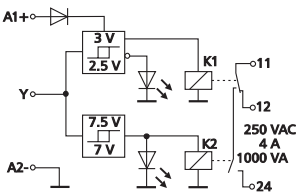
Housing Dimensions



Wiring



Wiring Diagram



Description

The threshold gate serves as control for aggregates, pumps, fans, burners etc.
An analogue control signal between 0 and 10 V is used for operation. In the automatic mode ("Auto") the relay is activated as soon as the input voltage reaches the threshold. If the input voltage falls below the turn-off threshold the relay drops off.

Functional Description

The module is designed for a two-stage control by an analogue control signal of 0 up to 10 V DC.
Control signal 0 V DC = stage 1 active
Control signal 5 V DC = no active stage (OFF)
Control signal 10 V DC = stage 2 active

Technical Data

Input	nominal voltage U_N	24 V AC/DC
	current consumption	
	at 24 V AC	100 mA
	at 24 V DC	35 mA
	current consumption (input Y)	
	at 10 V DC	1 mA
	operating voltage range	0.9 ... 1.1 x U_N
	duty cycle	100 %
	response time	20 ms
	release time	20 ms
	protective circuitry	polarity reversal protection at inputs, varistor at A1 - A2
	relay status indication	2 LED
	stage 1	yellow
	stage 2	rot
	operating temperature range	-10 °C ... +50 °C
Output	storage temperature range	-25 °C ... +70 °C
	output contact	1 changeover contact with zero position
	contact material	AgNi
	switching voltage max.	250 V
	input/output current	4 A
	contact fuses	6 A
	making/breaking capacity	
	at resistive load	6 A / 250 V / 1500 VA
	mechanical endurance	1x10 ⁷ switching cycles
	electrical endurance	1x10 ⁵ switching cycles
	permissible switching frequency	1200 switching cycles/h
	isolation per VDE 0110	
	rated voltage	250 V AC/DC
	overvoltage category	III
Housing	pollution degree	2
	test voltage coil/contact	4000 V, 50 Hz 1 min
	at resistive load	120 V AC/28 V DC, 100 mA
	type of protection (EN 60529)	housing IP50, terminal blocks IP20
	wire cross section	2.5 mm ²
	mounting	any
	colour	green
	weight	70 g
	housing dimensions WxHxL	22.5 x 60 x 60
	modular	without spacing