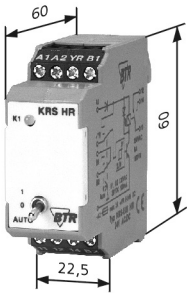
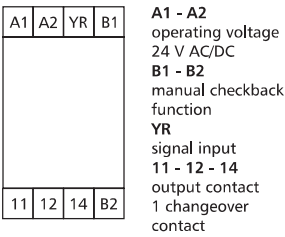


Threshold Gate

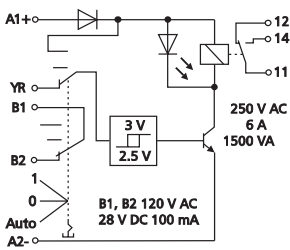
Housing Dimensions



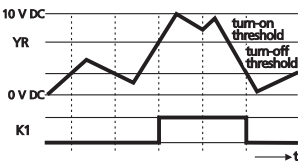
Wiring



Wiring Diagram



Function Diagram



Description

The threshold gate serves as control for aggregates, pumps, fans, burners etc. An analogue control signal between 0 and 10 V is used for operation. In the automatic mode ("Auto") the relay is activated as soon as the input voltage reaches the threshold. If the input voltage falls below the turn-off threshold the relay drops off. The device is provided with a manual control facility with checkback function for servicing purposes.

Functional Description

The module offers two operation modes, they are set by the three-position switch (Auto, 0, 1).

- Switch position "1":**  
The output relay is controlled by contacts A1 and A2.
- Switch position "Auto":**  
The output relay is controlled by the voltage at input YR. The relay is activated at a voltage of >3 V DC and drops off at a voltage of <2.5 V DC. Voltage has to be continuously applied at contacts A1 and A2.
- Switch position "0":**  
The relay is switched off (bridge over contacts 11 and 12).

Technical Data

Input	nominal voltage $U_N$	24 V AC/DC
	current consumption	
	at 24 V AC	80 mA
	at 24 V DC	16 mA
	current consumption (input YR)	
	at 10 V DC	1 mA
	operating voltage range	0.9 ... 1.1 x $U_N$
	duty cycle	100 %
	turn-on voltage (threshold)	3.0 V DC
	turn-off voltage	2.5 V DC
Output	response time	20 ms
	release time	20 ms
	protective circuitry	polarity reversal protection at inputs, varistor at A1 - A2
	relay status indication	LED yellow
	operating temperature range	-10 °C ... +50 °C
	storage temperature range	-25 °C ... +70 °C
	output contact	1 changeover contact
	contact material	AgNi
	switching voltage max.	250 V
	input/output current	6 A
Housing	contact fuses	6 A
	making/breaking capacity	
	at resistive load	6 A / 250 V / 1500 VA
	mechanical endurance	1x10 <sup>7</sup> switching cycles
	electrical endurance	1x10 <sup>5</sup> switching cycles
	permissible switching frequency	1200 switching cycles/h
	isolation per VDE 0110	
	rated voltage	250 V AC/DC
	overvoltage category	III
	pollution degree	2
Housing	test voltage coil/contact	4000 V, 50 Hz 1 min
	switching capacity (switch)	
	at resistive load	120 V AC/28 V DC, 100 mA
	type of protection (EN 60529)	housing IP50, terminal blocks IP20
	wire cross section	2.5 mm <sup>2</sup>
	mounting	any
	colour	green
	weight	70 g
	housing dimensions WxHxL	22.5 x 60 x 60
	modular	without spacing

KRS-E08 HR

24 V AC/DC - 1 changeover contact

- LED indication
- manual control facility with checkback function

Part Number	
110 667	threshold: 3 V DC manual control facility: 1/0/Auto

