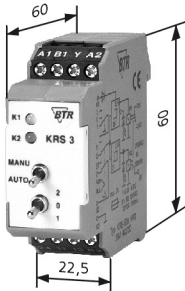


Threshold Gate

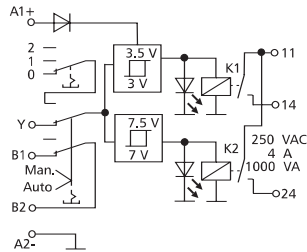
Housing Dimensions



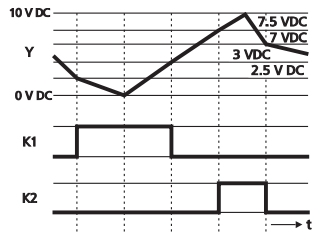
Wiring

A1	B1	Y	A2
<div><div>A1 - A2 operating voltage 24 V AC/DC</div><div>B1 - B2 manual checkback function</div><div>Y - A2 signal input 11 - 12 - 24 output contact 1 changeover contact</div></div>			
24	11	12	B2

Wiring Diagram



Function Diagram



Description

The threshold gate serves as control for aggregates, pumps, fans, burners etc.  
An analogue control signal of 0 up to 10 V for operation. In the automatic mode ("Auto") the relay is activated as soon as the die input voltage reaches the threshold. If the input voltage falls below the turn-off threshold the relay drops off.  
A manual control facility with checkback function is incorporated for servicing purposes.

Functional Description

The module is designed for a two-stage control by an analogue 0 to 10 V DC control signal. For this the module has to be in the operation mode "AUTO".  
Control signal 0 V DC = stage 1 active  
Control signal 5 V DC = no active stage (OFF)  
Control signal 10 V DC = stage 2 active

If the module is in the manual operation mode ("HAND") the stages are selected by the switch "0 / 1 / 2".

Switch position 1 = stage 1 active  
Switch position 0 = no active stage (OFF)  
Switch position 2 = stage 2 active

Technical Data

Input	nominal voltage $U_N$	24 V AC/DC
	current consumption	
	at 24 V AC	100 mA
	at 24 V DC	35 mA
	current consumption (input Y)	
	at 10 V DC	1 mA
	operating voltage range	0.9 ... 1.1 x $U_N$
	duty cycle	100 %
	response time	20 ms
	release time	20 ms
Output	protective circuitry	polarity reversal protection at inputs, varistor at A1 - A2
	relay status indication	2 LED
	stage 1	yellow
	stage 2	red
	operating temperature range	-10 °C ... +50 °C
	storage temperature range	-25 °C ... +70 °C
	output contact	1 changeover contact with zero position
	contact material	AgNi
	switching voltage max.	250 V
	input/output current	4 A
Housing	contact fuses	4 A
	making/breaking capacity	
	at resistive load	6 A / 250 V / 1500 VA
	mechanical endurance	1x10 <sup>7</sup> switching cycles
	electrical endurance	1x10 <sup>5</sup> switching cycles
	permissible switching frequency	1200 switching cycles/h
	isolation per VDE 0110	
	rated voltage	250 V AC/DC
	overvoltage category	III
	pollution degree	2
Housing	test voltage coil/contact	4000 V, 50 Hz 1 min
	switching capacity (switch)	
	at resistive load	120 V AC/28 V DC, 100 mA
	type of protection (EN 60529)	housing IP50, terminal blocks IP20
	wire cross section	2.5 mm <sup>2</sup>
	mounting	any
	colour	green
	weight	70 g
	housing dimensions WxHxL	22.5 x 60 x 60
	modular	without spacing

KRS-E08 HR3

24 V AC/DC - 1 changeover contact with zero position

- LED indication
- manual control facility with checkback function

Part Number

110 665	threshold: 0 V / 5 V / 10 V DC Hand/Auto: 0 / 1 / 2
---------	--

